

An aerial photograph of a rugged mountain range. The peaks are covered in snow and partially obscured by thick, white clouds. The sky is a clear, pale blue. The overall scene is majestic and serene.

Climsoft – Quick Installation Guide

February 2020

Table of Contents

1. Introduction	3
1.1 System Requirements	3
2. Choice of the right setup for your Operating System Architecture	3
3. Installation of Climsoft and additional applications	4
3.1 Installation of Climsoft application	4
3.2 Installation of additional applications required by Climsoft.....	5
3.2.1 Installation of Microsoft .Net Framework.....	6
3.2.2 Installation of Visual Studio Runtime Application	6
3.2.3 Installation of Microsoft Visual Studio tools for Office Runtime 2010	7
3.3.4 Installation of Windrose Plot Application.....	8
4. Installation and configuration of MariaDB	9
5. Creation of Climsoft database in MariaDB and First Login	12
6. Setup Users permission to Climsoft folder and sub folders (apply only for V4.1.4 and earlier versions).	16

Welcome to the Climsoft version 4 Quick Installation Guide. This guide is intended to all Climsoft users, and will help you navigate the five steps installation and configuration process of Climsoft and associated applications.

The five steps for installing and configuring Climsoft are:

1. Choice of the right setup package for your Operating System (OS) Architecture;
2. Installation of Climsoft application and additional applications package;
3. Installation and configuration of MariaDB (DBMS);
4. Creation of Climsoft database in MariaDB and first login; and
5. Setup Users permission to Climsoft folder and sub folders (case of Climsoft version 4.1.4 and earlier versions).

1. Introduction

The Climsoft system is a suite of software which is specifically designed for storing climatic data in a secure and flexible manner, and for obtaining useful information using these data. Climsoft version 4 was developed using Microsoft Visual Basic.NET. The default database storage engine is the open source MariaDB which is a fork from MySQL.

1.1 System Requirements

1.1.1 Hardware

Computer with processor speed of 1 GHz, 2 GB RAM and enough disk space for installation of application software and storage of database. A minimum of 20 GB disk space is recommended. More disk space will be required for storage of AWS data and images of paper records for Data Rescue. However, it would be ideal to store images of paper records on removable storage media like external hard drives or Network Access Storage (NAS). Internet connection is also desirable.

1.1.2 Software

- Microsoft Windows 7 or later, 64-bit Operating System (OS) is recommended for optimum performance of the database. Climsoft Version 4 is compatible with the following Windows Operating Systems: XP, Vista, Windows 7, Windows 8.x and Windows 10;
- Microsoft Office with Excel spreadsheet is required since Excel spreadsheet application is the default application for displaying data products from Climsoft;
- Antivirus software;
- Minimum.Net Framework 4.5 is required. This version of the .NET framework is packaged with the Climsoft setup package;
- MariaDB/MySQL database system and Climsoft database scripts which are also supplied and will be copied into the subfolder called "dbase" in the installation folder;
- WRPlot software for Windrose plotting which will be copied into subfolder called "Bin" in the installation folder.

2. Choice of the right setup for your Operating System Architecture

Please ensure that your PC meets the hardware and software requirements before you attempt to install Climsoft. You must also have Administrator privilege for you to be able to install Climsoft and associated applications.

There are two setup packages distribute for Climsoft, one for 32-bit Windows Operating System (OS) and the other for 64-bit OS. You must therefore choose the setup package that matches your Operating System.

To be able to know which Operating System your computer is using follow the steps below:

Step1: Go to "**Windows Start**" Button;

Step2: Go to "**My Computer**" then "**Right click**";

Step3: Go to "**Properties**";

Step4: Under "**System**", you should be able to see the **system type** which displays the Operating System type your computer is using (E.g.: 64-bit Operating System or 32-bit Operating System).

3. Installation of Climsoft and additional applications

3.1 Installation of Climsoft application

1. If you have received your copy of Climsoft on a CD or Stick, insert it now to start the installation. Locate the right setup for your Computer, i.e. "Climsoft_v4_setup_32-bit.exe" for 32 -bit OS and "ClimsoftT_v4_setup_64-bit.exe" for 64-bit OS;
2. Run the executable file with elevated privilege (Figure1). This means you must right click on the setup file and choose "**Run as Administrator**" ;

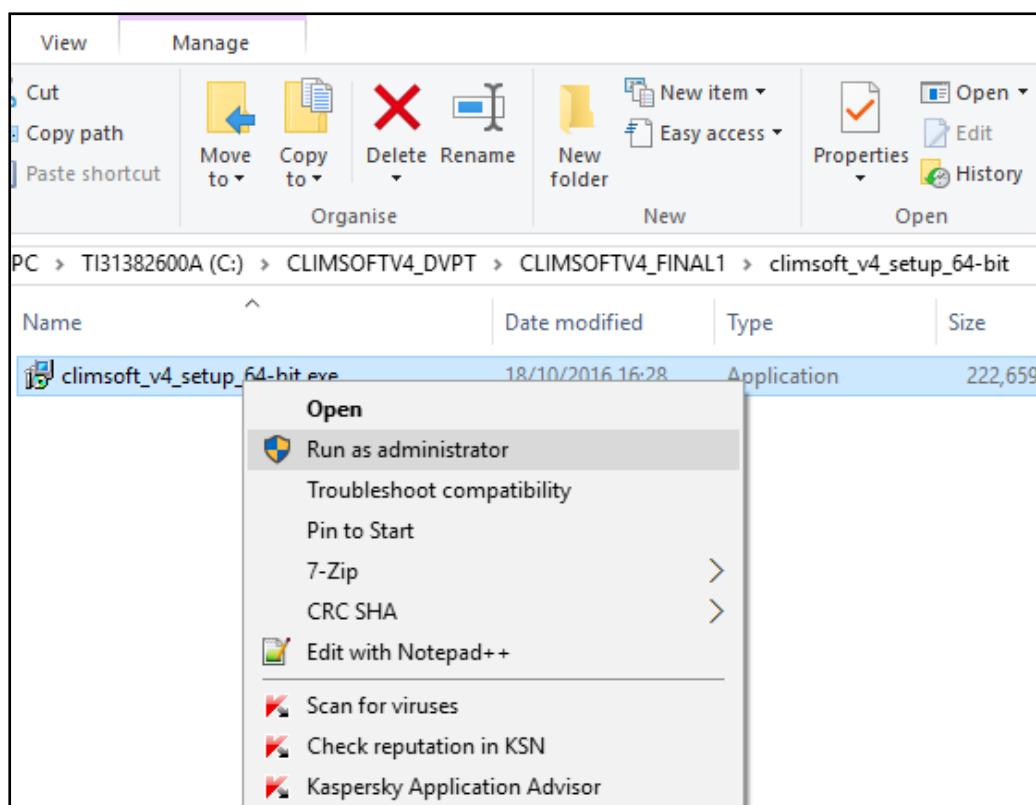


Figure1 - Run the setup as administrator

3. Click "**Yes**" to allow the program to make changes to your computer;
4. Select your desired language for installation (E.g.: English);
5. Click "**OK**" to continue;
6. Read the licensing agreement; select "**I accept the agreement**" to agree to the terms; then click "**Next**";

7. Click **“Next”** to accept the program to install Climsoft in the default destination folder (recommended) or click **“Browse”** to customize this option and then click **“Next”**;
8. Click **“Next”** to accept the default start menu folder shortcuts (recommended) or click **“Browse”** to customize this option and then click **“Next”**;
9. Click **“Next”** to create a desktop icon for launching Climsoft (recommended) or uncheck the box beside **“Create a desktop icon”** and then click **“Next”**;
10. Read over your choices for the **“Destination location”**, **“Start Menu folder”** and **“Additional tasks”** options and then click **“Install”** (recommended) if you are satisfied;
11. Click **“Next”** to continue;
12. Click **“Finish”**.

3.2 Installation of additional applications required by Climsoft

When the core Climsoft setup has been completed, a dialog with options for installing additional applications required by Climsoft will display automatically as shown in Figure2 below:

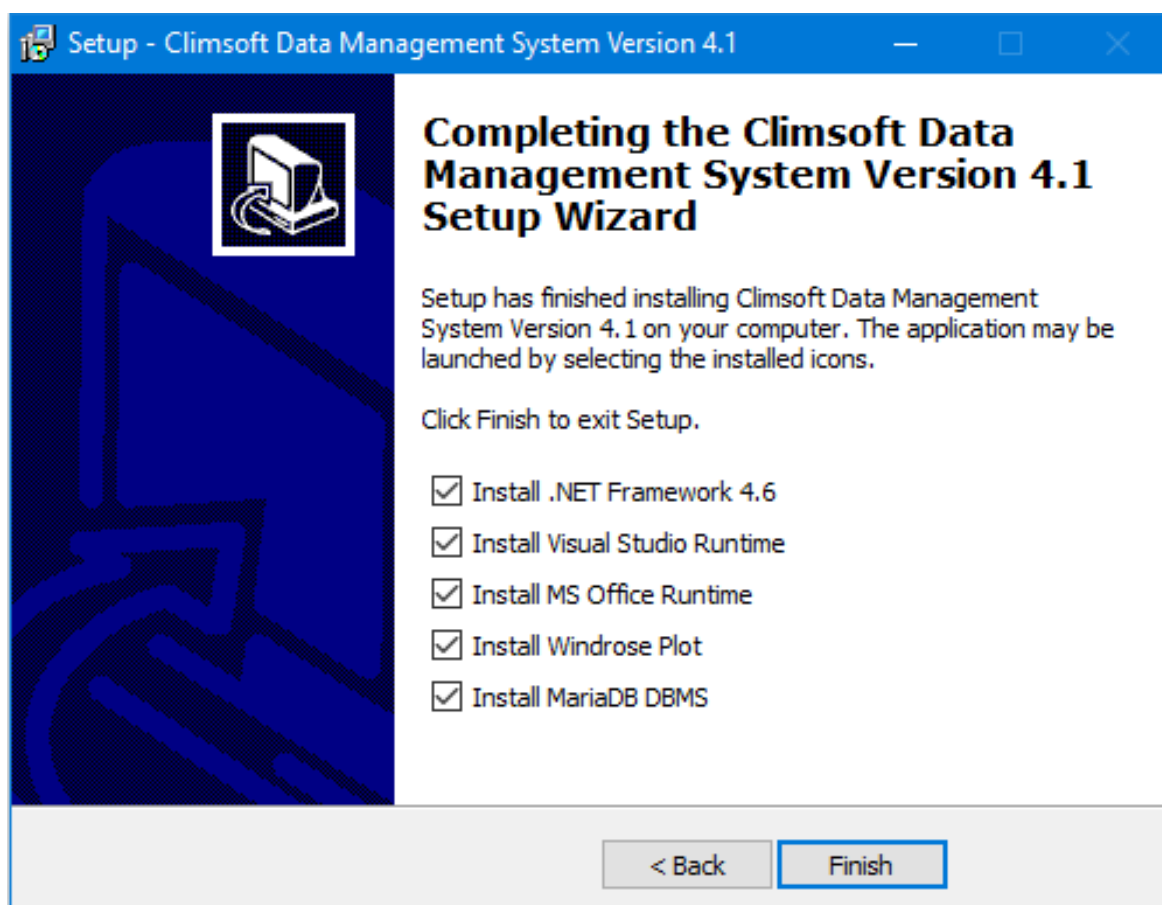


Figure 2 - Installation of additional applications

Note: Do not uncheck the selected applications. If you have already installed MariaDB, you can uncheck/deselect the box for installing MariaDB Database Management System (DBMS) and then click on the Finish button to install the above selected packages.

All the applications listed in Figure 2 above will be installed automatically one after the other, in the order that they are listed in the dialog above, these are: **Microsoft .Net Framework 4.6**,

Visual Studio Runtime, Microsoft Office Runtime, Windrose Plot and MariaDB (if selected).

3.2.1 Installation of Microsoft .Net Framework

After clicking on "Finish" button above (Figure 2), the wizard will install "**Microsoft .Net Framework 4.6**". If the wizard found the latest version of **Microsoft .Net Framework** on your computer, following message will be display "**Microsoft .Net Framework 4.6.1 or later update is already installed on this computer**" (Figure 3), in this case Click "**Close**" button to continue with the next installation, otherwise click the button "**Continue**" below to install this application.

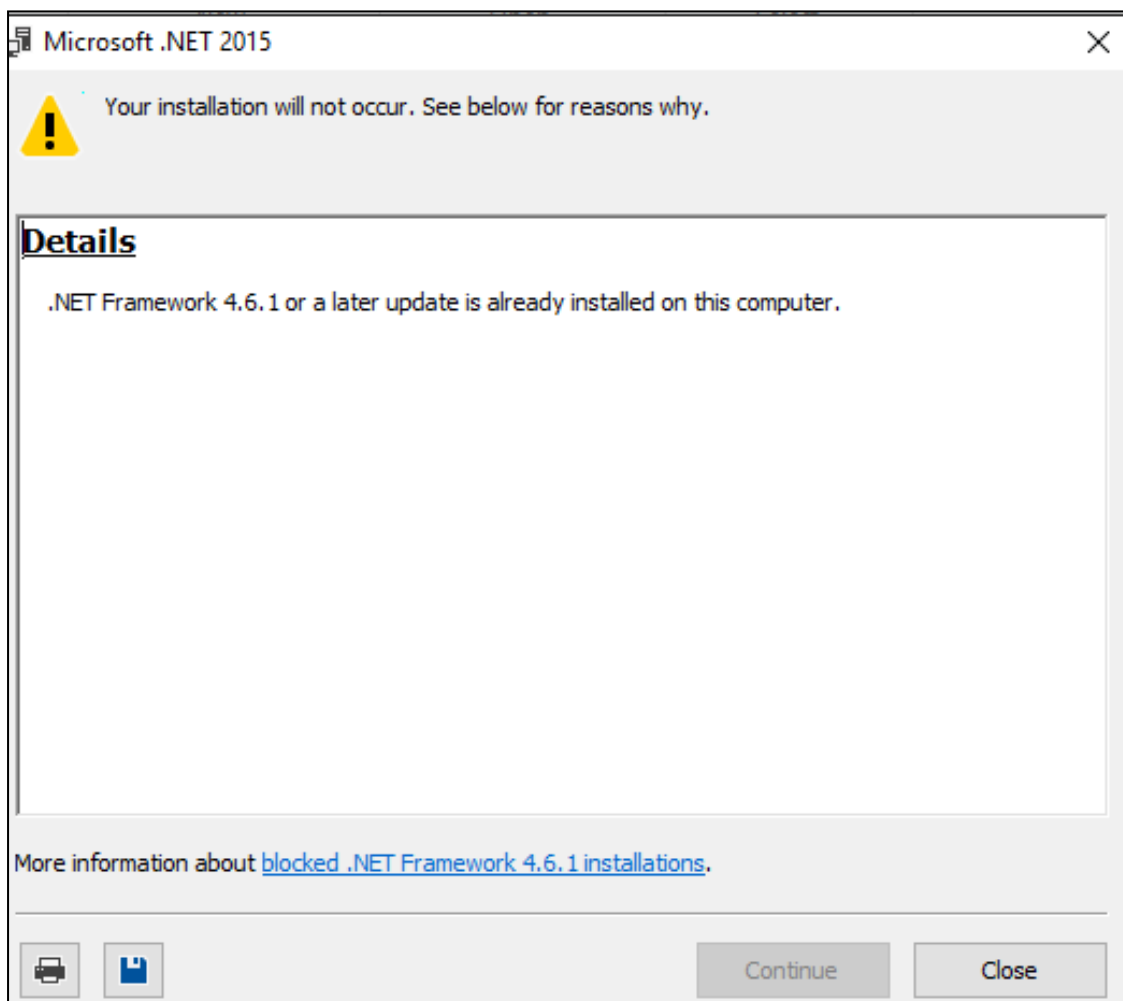


Figure 3 - Warning about the newer version of Microsoft.Net Framework

3.2.2 Installation of Visual Studio Runtime Application

After completing the installation of Microsoft .Net Framework, the installation of Visual Studio Runtime will follow automatically. If you get a warning showing that you already have a newer version of Visual Studio Runtime as shown in Figure 4 below, click "**Close**" button to continue with the installation of the next application, otherwise click the button "**Continue**" to install this application.

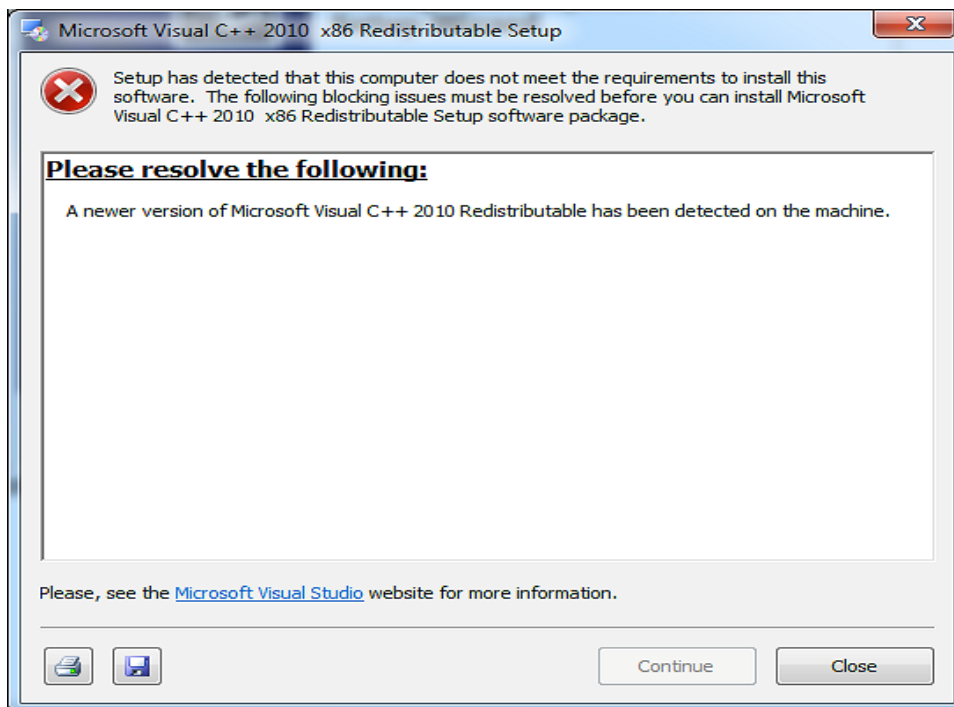


Figure 4 - Warning about newer version of Visual Studio Runtime

3.2.3 Installation of Microsoft Visual Studio tools for Office Runtime 2010

After completing the installation of Visual Studio Runtime, **Microsoft Visual Studio tools for Office Runtime 2010** will be installed (Figure 5), **tick** the box before “**I have read and accept the licence terms**” and then click on “**Install**” button to install this application.

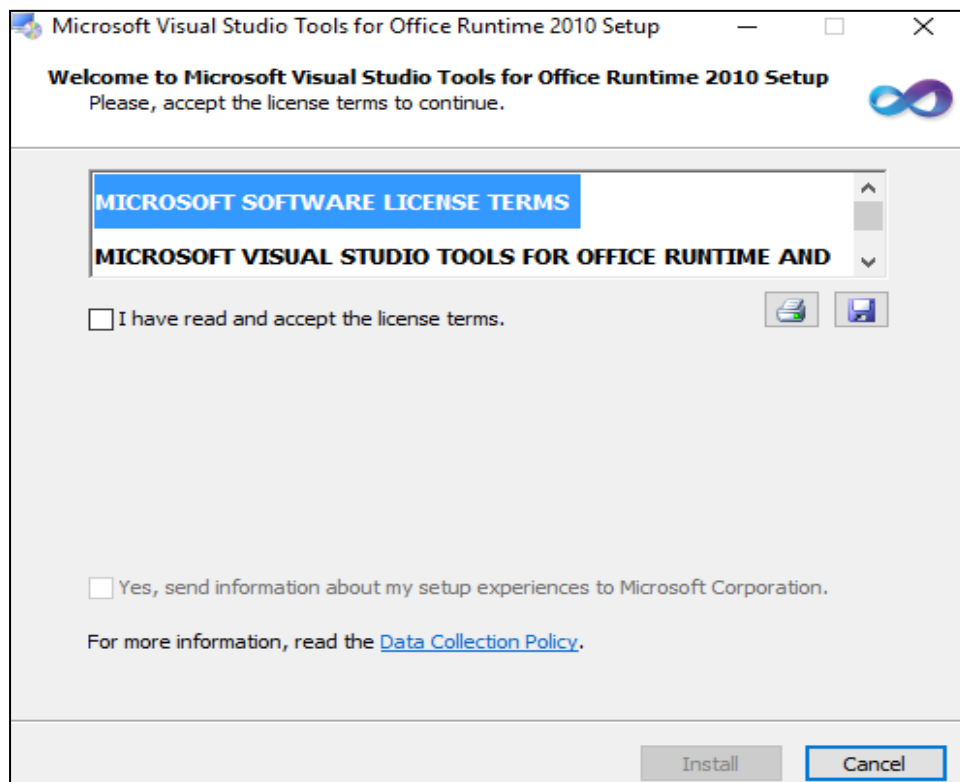


Figure 5 - Installation of Ms Visual Studio tools for Office Runtime

3.3.4 Installation of Windrose Plot Application

After completing the installation of Microsoft Visual Studio tools for Office Runtime, windrose plot application will automatically follow (Figure 6):

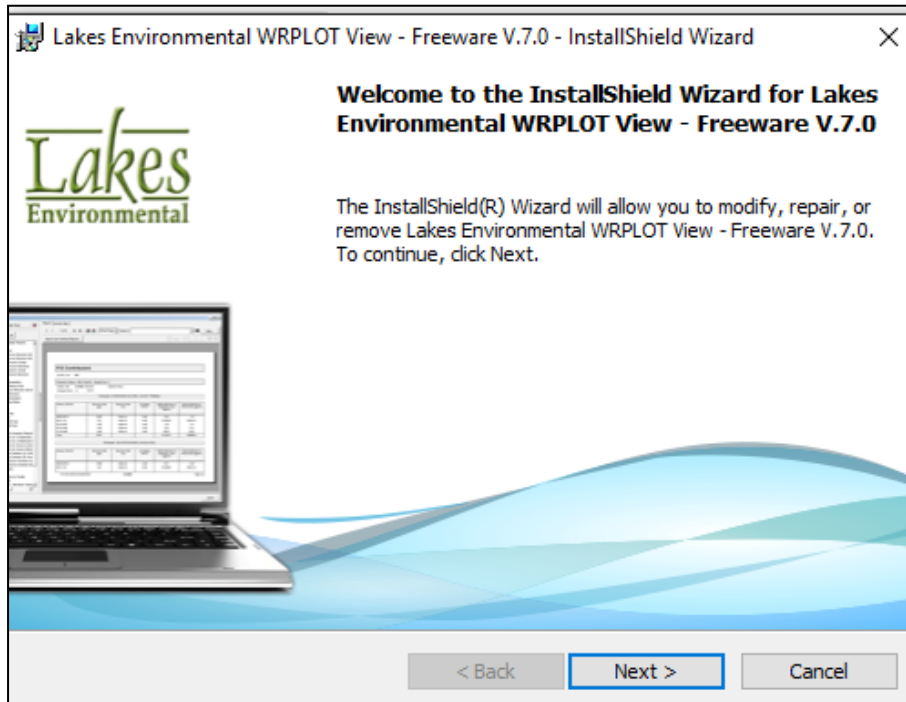


Figure 6 - Installation of Windrose Plot Application

If this application is already installed you will see the dialog below (Figure 7). Click **"Next"** to allow the setup to modify and reinstall **WRPlot** or **"Cancel"** to continue with the next application.

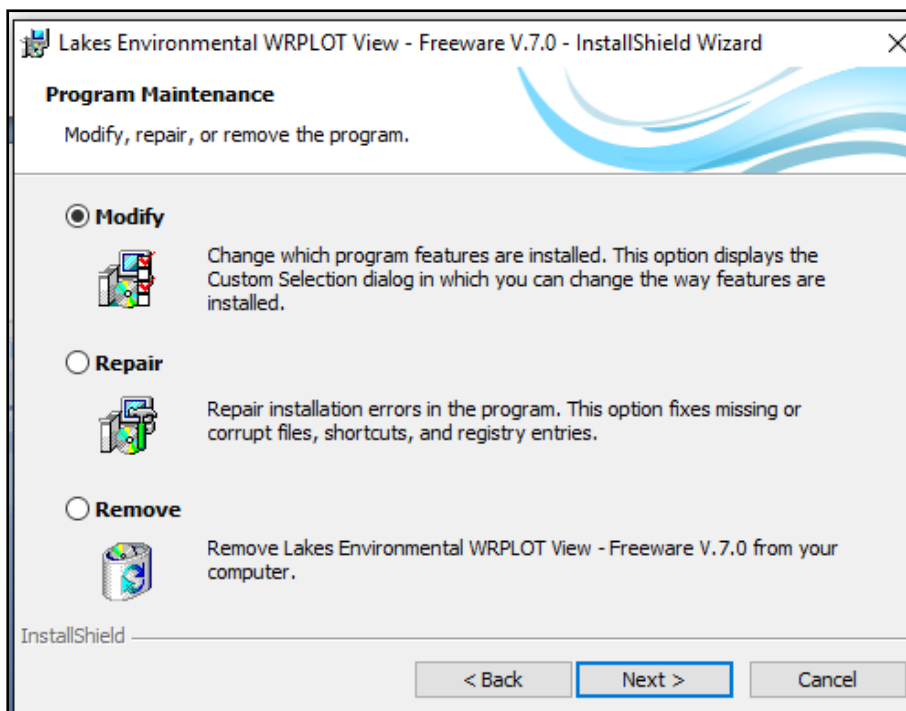


Figure 7 - Windrose Plot Program Maintenance

Note: If the installation of WRPlot appears to be taking too long to complete, check for a second the installation dialog that may be minimized on the bottom on the task bar requiring your input. If that dialog is there, open it and respond to it as appropriate.

Important

Although WRPlot is a freeware, you need a license key to activate the application. An initial license key which is valid for one year is contained in the file "WRPlot_license.txt" in the sub folder "Bin" in the Climsoft installation folder(C:\Program Files (x86)\climsoftv4\Bin).

To renew the license you need to visit the "Lakes Environmental" website at <https://www.weblakes.com/products/wrplot/registration.html> and register for the new licence (activation key): Fill your details including your email, after submission of you details, you will received an activation code in your mail box in few seconds. Use this to activate your wind rose application.

4. Installation and configuration of MariaDB

After the installation of windrose plot application, the wizard will continue automatically with the installation of MariaDB if it was ticked/ selected (see Figure 2). Click "Next and accept the licence to continue as shown below (Figure 8):

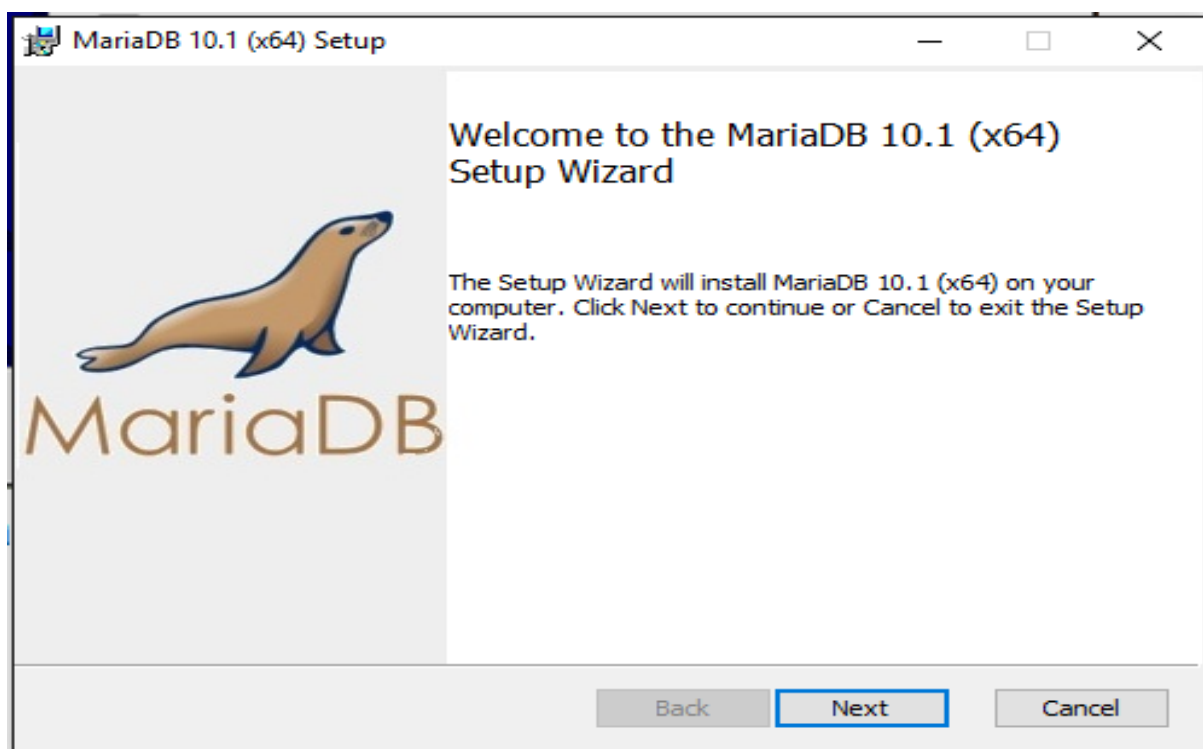


Figure 8 - MariaDB Setup wizard

Click Next, to create a new database instance (Figure 9)

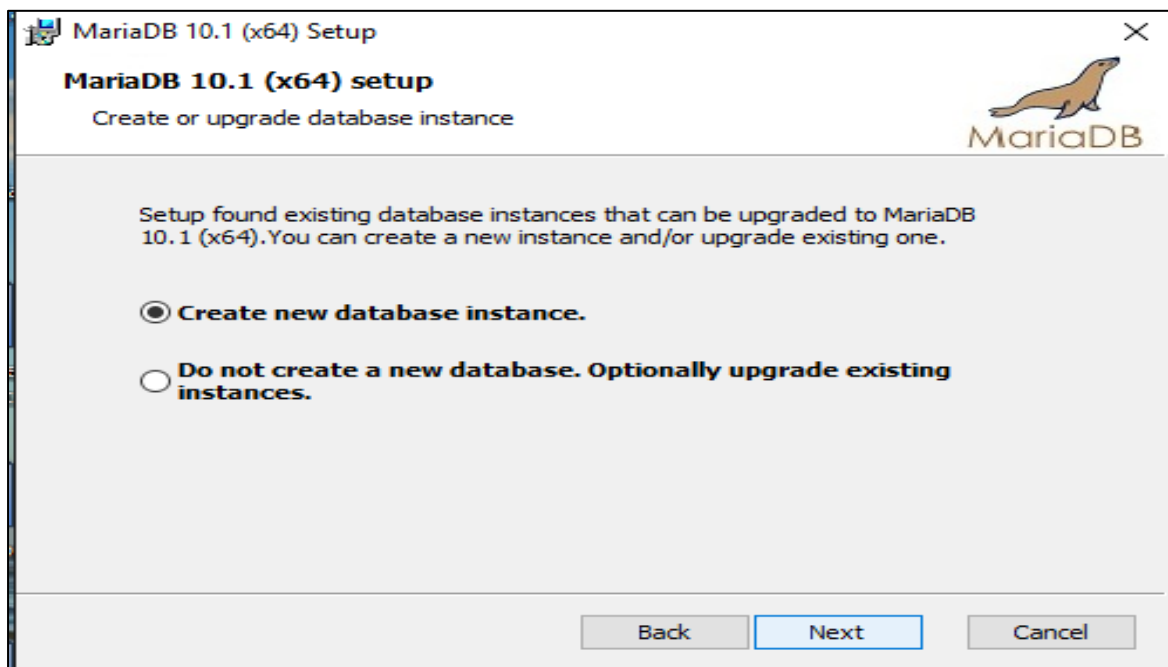


Figure 9 - MariaDB database instance

Fill the **root password**, **confirm your password** (Figure 10) then click "Next" to continue.

Note: It is very important to take note of the password that you define during the installation of MariaDB since the same password will be required when you login for the first time into Climsoft.

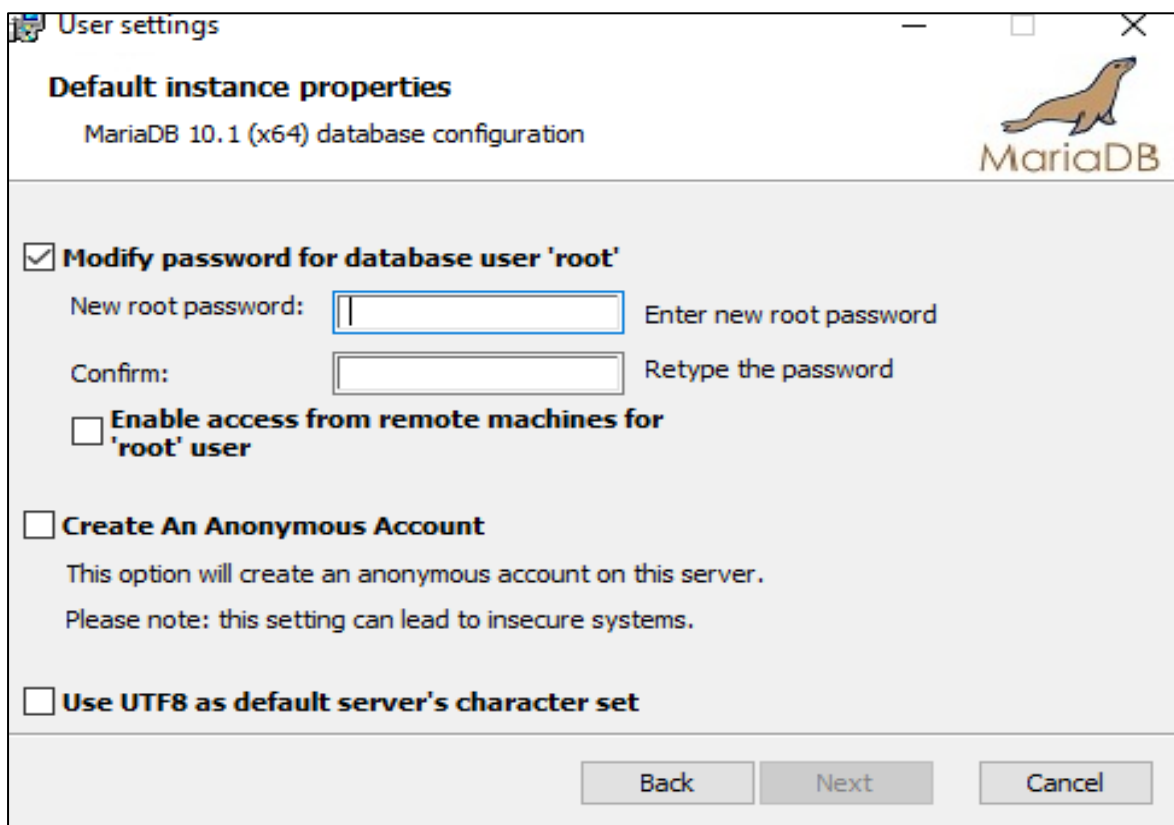


Figure 10 - MariaDB user settings properties definition

Important

Change the service name by replacing the default service name **MySQL** by **MARIADB** and the port number by replacing the default **3306** by **3308**. (i.e.: from Figure 11 to Figure 12) This is the port number (TCP Port) defined in the configuration file for connecting to the MariaDB database that comes with the Climsoft setup. **It is strongly recommended to choose Port 3308**. If you choose a different port number, you will need to reconfigure the connection to the database to make the port number the same as the one you would have configured during MariaDB setup.

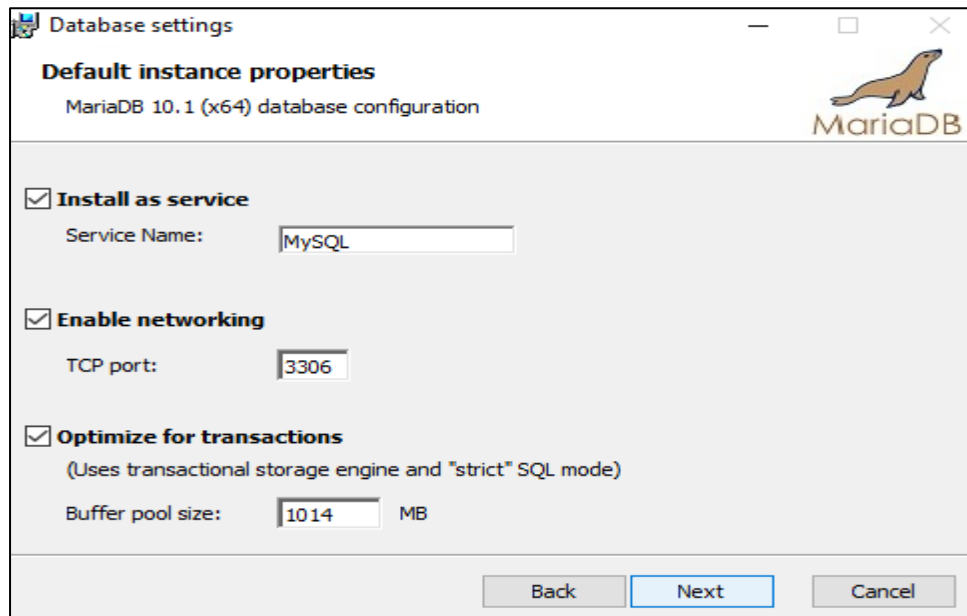


Figure 11 - MariaDB database default settings

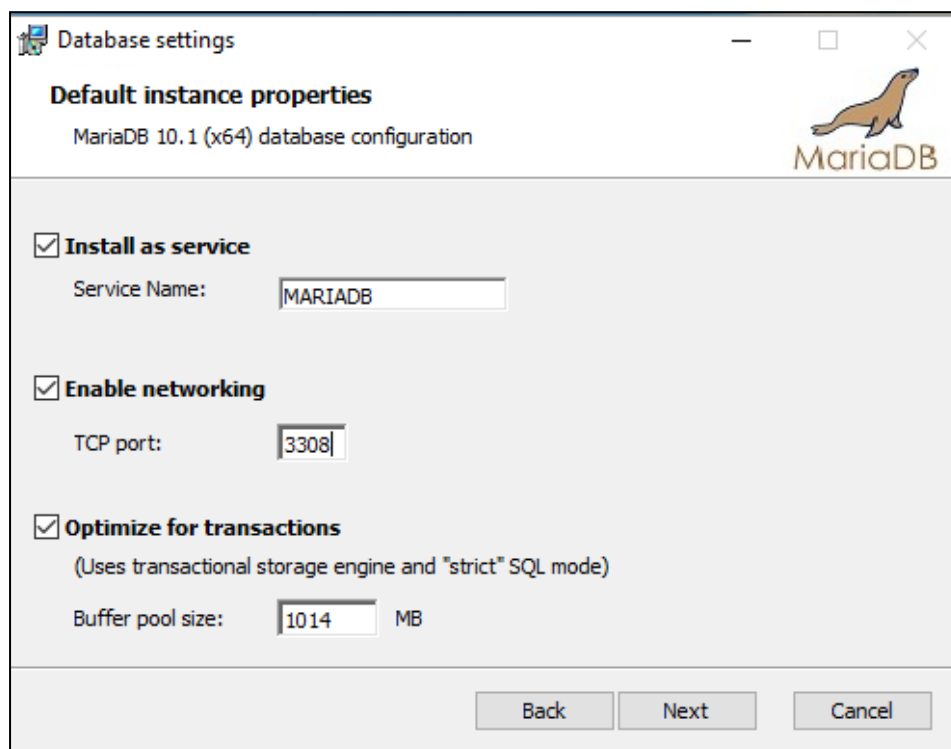


Figure 12 - MariaDB database required settings

Click "**Next**" and then "**Next**" and "**Finish**" button (Figure 13) to finish the installation and configuration of MariaDB Database Management System.

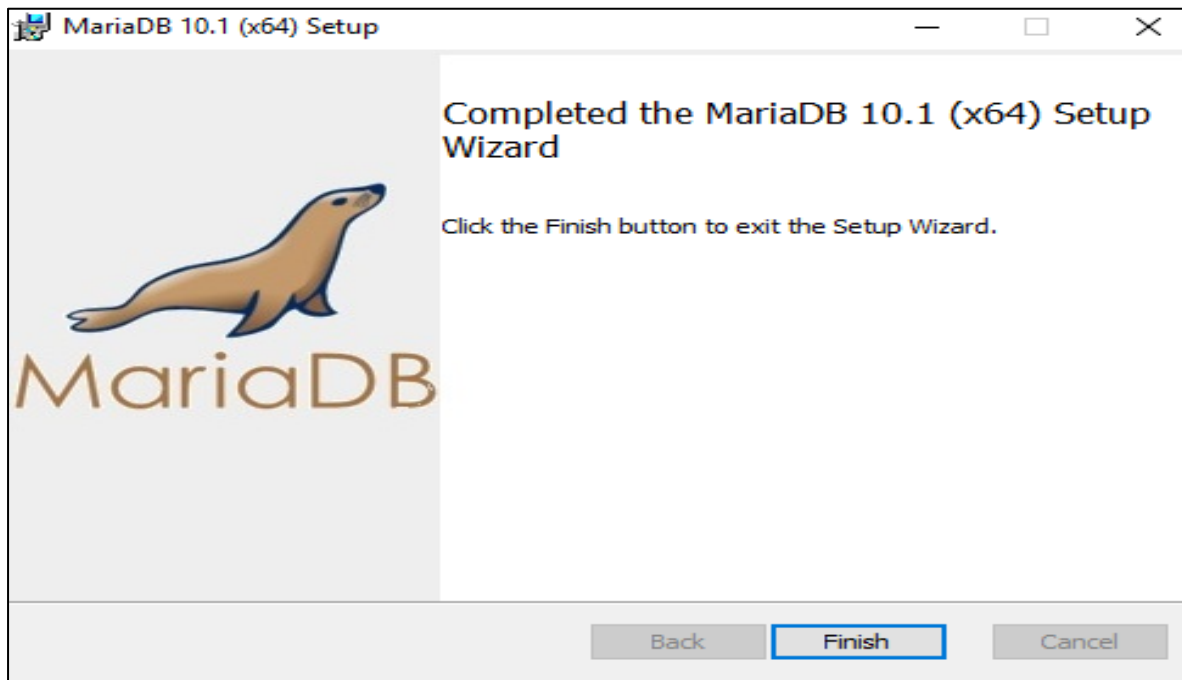


Figure 13 - MariaDB complete setup wizard

NOTE: *If prompted to restart the computer before all selected installations are complete, please choose "**restart later**" and then re-start the computer when all installations are completed.*

5. Creation of Climsoft database in MariaDB and First Login

After a successful installation of Climsoft and additional applications required for running Climsoft, you need to create the Climsoft database in MariaDB using the following steps:

Step1: Launch MariaDB Prompt from your program as follow "**Start Menu**", select and click on the "**MySQL Client (MariaDB 10.x)**" as shown below (Figure14). Alternatively, you can type the word "**Mariadb**" in the **search window** and a list of programs will be populated and then choose "**MySQL Client (MariaDB 10.x)**" from the list.

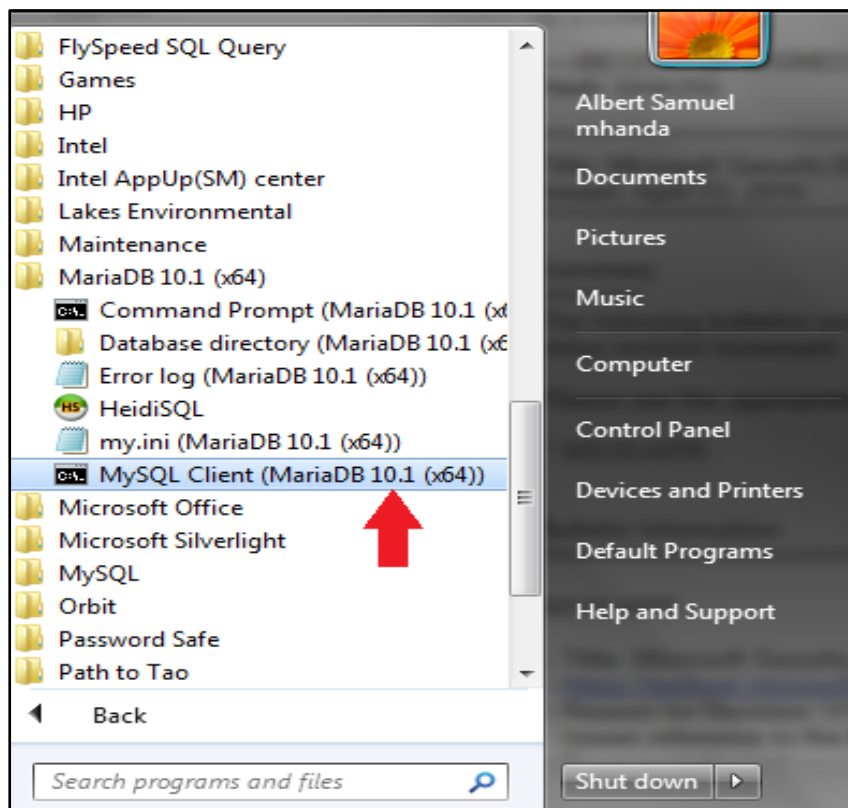


Figure 14 - Launching MariaDB Client

Step2: By clicking on **MySQL Client (MariaDB 10.x)** a dialog for entering the password will display as show below:

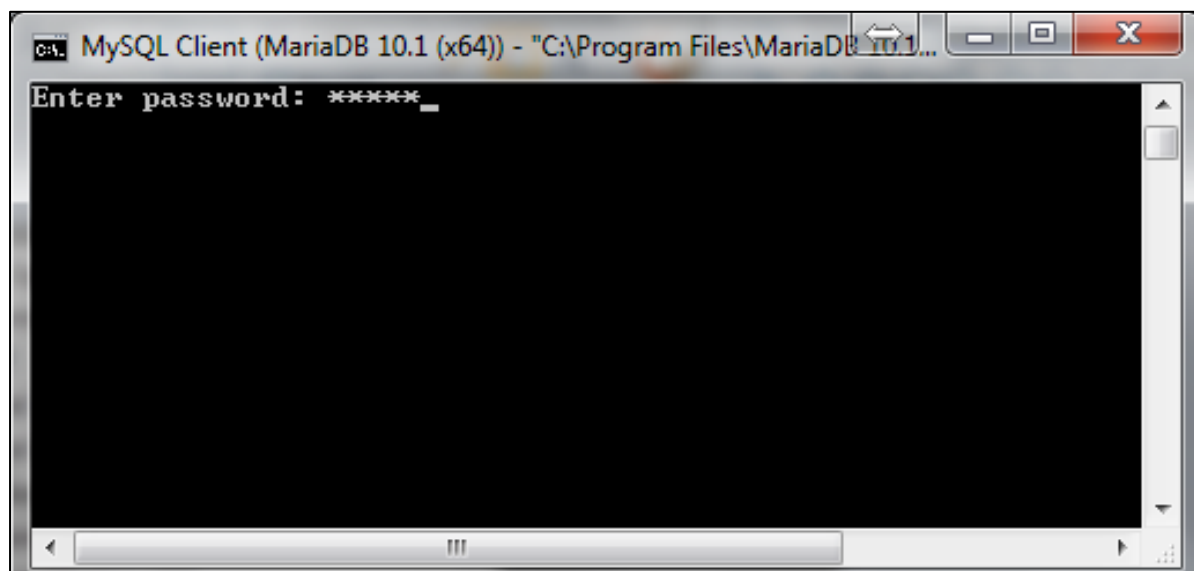


Figure 15 - Entering password on MariaDB Client Prompt

Note that the username is assumed to be “**root**” and there is no provision for entering the username if you have launched the MariaDB Client Prompt as described above. Type correctly the password for the username “**root**”. If you have entered the correct password i.e. the same password that you entered during the installation of MariaDB, the prompt should then appear as shown in (Figure 16) below:

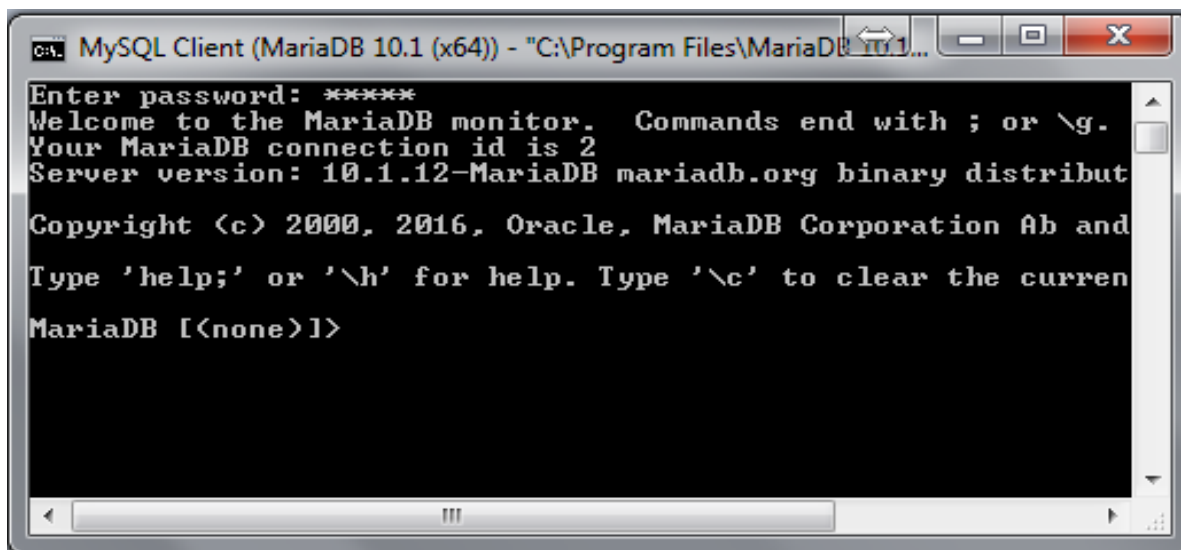


Figure 16 - MariaDB Prompt after entering correct password

Running the script

1. By default, the script file for creating the Climsoft Version 4 database in HeidiSQL application (MariaDB DBMS) is in the Path **"C:\Program Files (x86)\climsoftv4\Dbase"**. To run the script, you should type the following command **"Source C:\Program Files (x86)\climsoftv4\Dbase\mariadb_climsoft_db_v4_all.sql"** On the above prompt interface as shown (Figure 16) and press the **"Enter Key"**(Figure 17). If you have typed the command correctly, the script should run successfully and create the Climsoft Version 4 database in HeidiSQL application (MariaDB DBMS) installed previously (Figure 18).

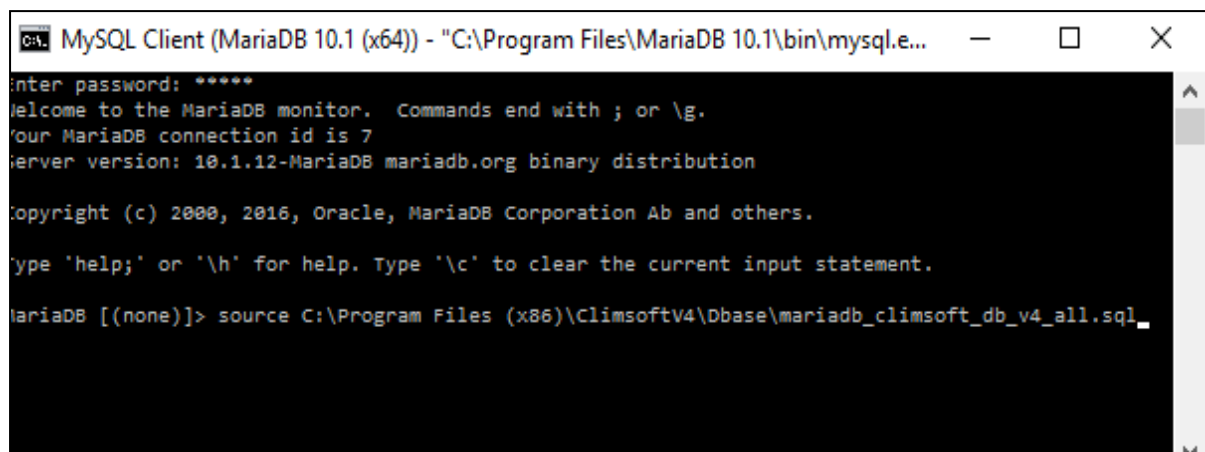
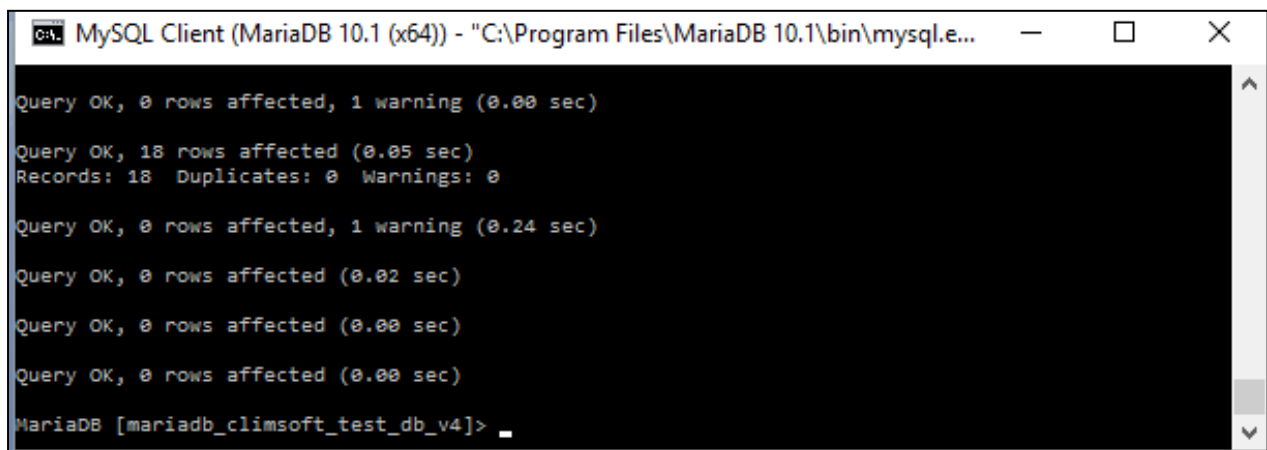


Figure 17 – Command to run the script



```

C:\> MySQL Client (MariaDB 10.1 (x64)) - "C:\Program Files\MariaDB 10.1\bin\mysql.e...
Query OK, 0 rows affected, 1 warning (0.00 sec)

Query OK, 18 rows affected (0.05 sec)
Records: 18  Duplicates: 0  Warnings: 0

Query OK, 0 rows affected, 1 warning (0.24 sec)

Query OK, 0 rows affected (0.02 sec)

Query OK, 0 rows affected (0.00 sec)

Query OK, 0 rows affected (0.00 sec)

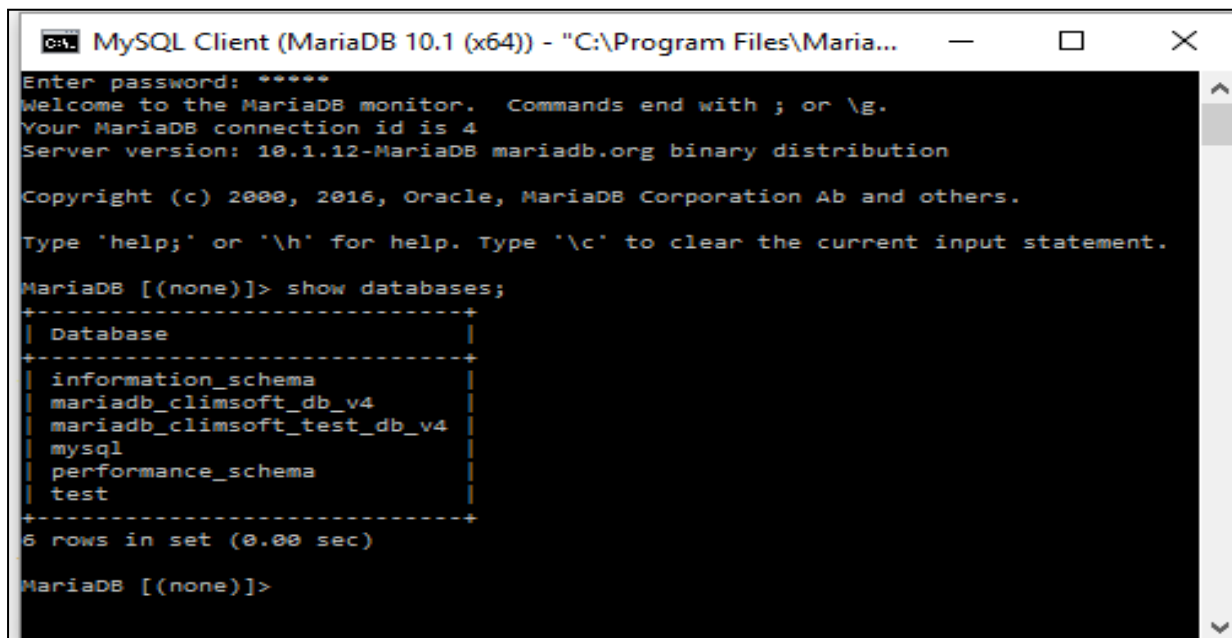
MariaDB [mariadb_climsoft_test_db_v4]>

```

Figure 18 – script running and terminate

2. Alternatively, if you decided to install Climsoft in this path “**C:\Program Files\climsoftv4\Dbase**”, you should then type the following command on the prompt: “**Source C:\Program Files\climsoftv4\Dbase\ mariadb_climsoft_db_v4_all.sql**” and press the “**Enter Key**” to run the script.

If you prefer, you can verify that the Climsoft Version 4 database has been created successfully by typing the following command on the MariaDB Client Prompt (Figure 13): “**Show databases;**” and press the “**Enter Key**”; two databases will be created “mariadb_Climsoft_db_v4 and mariadb_climsoft_test_db_v4, the later contains testing data to test the software while the former is empty because it is the operational database (Figure 19):



```

C:\> MySQL Client (MariaDB 10.1 (x64)) - "C:\Program Files\Maria...
Enter password: *****
Welcome to the MariaDB monitor.  Commands end with ; or \g.
Your MariaDB connection id is 4
Server version: 10.1.12-MariaDB mariadb.org binary distribution

Copyright (c) 2000, 2016, Oracle, MariaDB Corporation Ab and others.

Type 'help;' or '\h' for help. Type '\c' to clear the current input statement.

MariaDB [(none)]> show databases;
+-----+
| Database |
+-----+
| information_schema |
| mariadb_climsoft_db_v4 |
| mariadb_climsoft_test_db_v4 |
| mysql |
| performance_schema |
| test |
+-----+
6 rows in set (0.00 sec)

MariaDB [(none)]>

```

Figure 19 - Climsoftv4 databases created

6. Setup Users permission to Climsoft folder and sub folders (apply only for V4.1.4 and earlier versions).

*The settings described below apply to Climsoft version 4.1.4 and earlier versions.
In Climsoft version 4.1.5, settings permissions to Climsoft folder are no longer required.*

Those using Climsoft versions 4.1.4 and earlier are strongly recommend to setup access permissions to Climsoft installation folder and sub-folders as described in the following paragraphs:

By default, Climsoft is installed in a protected Windows folder i.e.: “C:\Program Files” or “Program Files (X86)” for a 64-bit version of Windows”.

Climsoft users will require permission to update Climsoft configuration file that is located in the “Bin” sub folder of the Climsoft installation folder.

For instance if the installation path is: C:\Program Files” or “Program Files (X86)” for a 64-bit version of Windows” then the “write permission” should be set to the sub folder “climsoftv4” and its subfolders located at “C:\Program Files” or “Program Files (X86)” for a 64-bit version of Windows” as follow:

- Step1:** Go to “C:\Program Files” or “Program Files (X86)” for a 64-bit version of Windows”;
Step 2: Right click on subfolder “climsoftv4” and select “Properties” then “Security”;
Step 3: In the dialog that follows, select the users or group of users that will be running Climsoft;
Step 4: Click on **Full Control** box then “Apply” and **OK** (Figure 20);

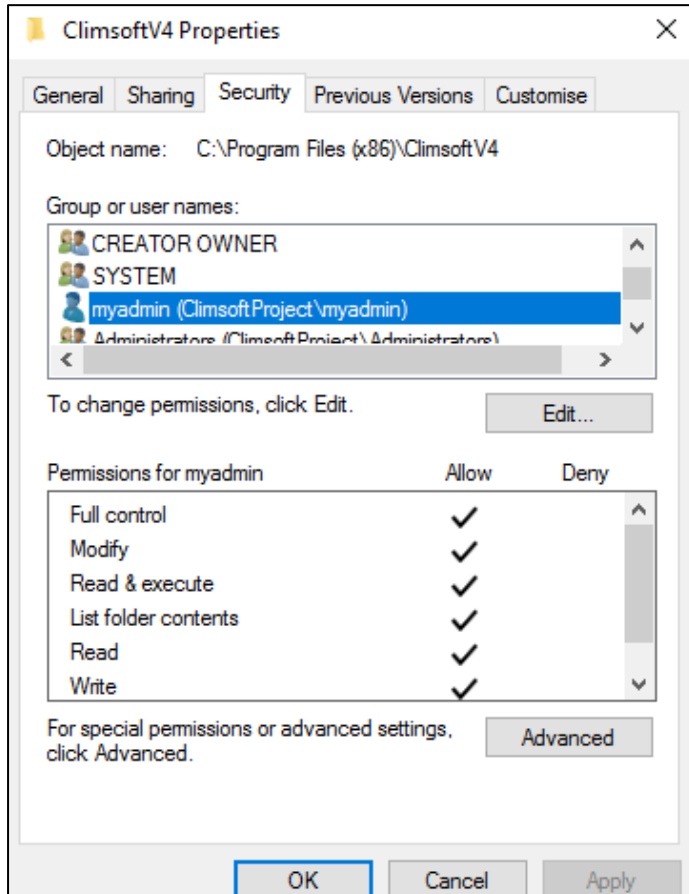


Figure 20 - Setup user's permission

Step 5: If the users or group of users is not on the list, Click "**Edit**" then "**Add**" followed by "**Advanced**" then "**Find Now**"

Step 6: Choose the right user in the list and click **OK** then Click on **Full Control** box then **OK**.

NOTE: These instructions are also listed in paragraph 4 of the document "**Readme_Climsoft_V4.txt**" found in sub folder "**bin**" of the Climsoft installation folder.

You are now ready to launch the Climsoft Version 4. Double click on the Climsoft icon on the desktop to launch Climsoft Version 4 application, In case, you have installed Climsoft version 4.1.4 and earlier versions, the dialog in figure 21 (a) below will be displayed and if you have installed version 4.1.5 or later versions, the dialog in figure 22 (a) below will be displayed. On the first login, the username must be "**root**".

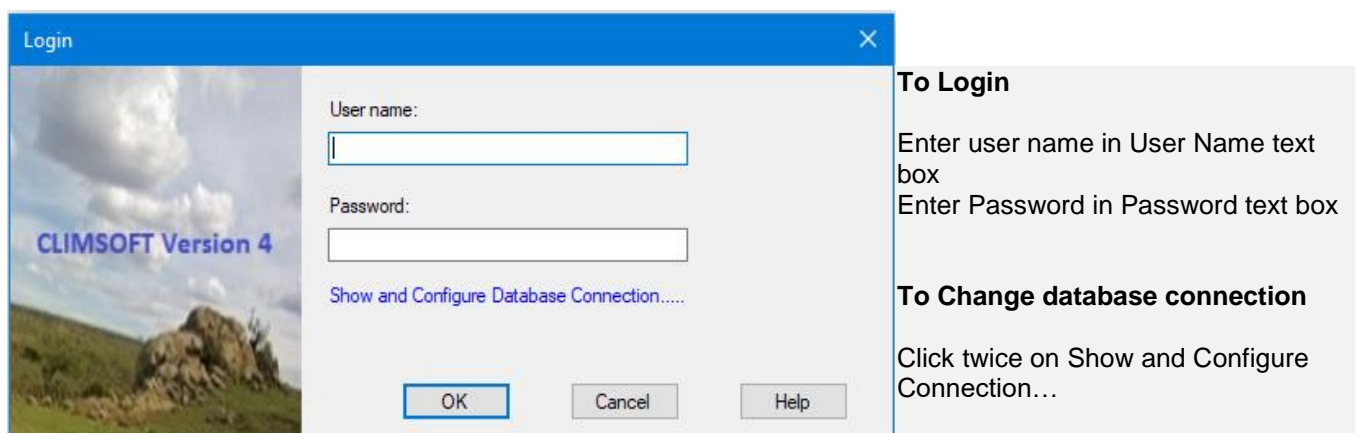


Figure 21 (a): Login Dialog for Climsoft Version 4.1.4 and earlier versions

If you are sure you have typed the correct username and password but have been denied access, click twice (not double click) on the blue label "**Show and configure database connection...**" on the above dialog to check the database connection details and adjust accordingly (case of climsoft version 4.1.4 and earlier versions) to open the dialog similar to Figure 21(b).

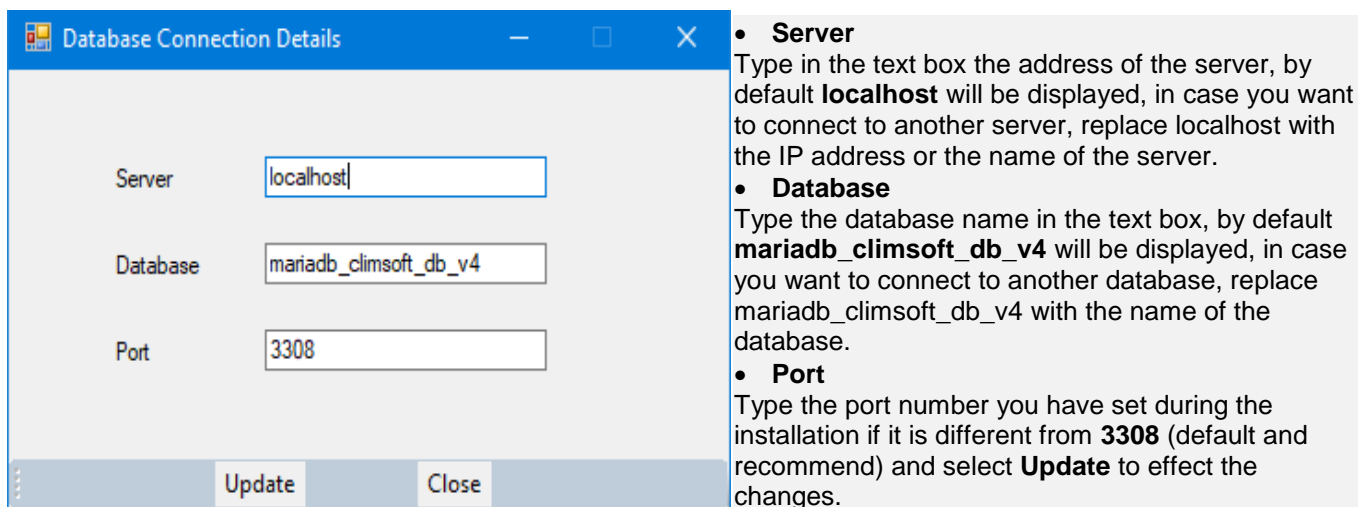


Figure 21 (b): Database connection details

If the database to which you want to connect is on your local computer then the server must be "**localhost**" or "**127.0.0.1**". If the port number you chose during the installation of MariaDB

is different from “3308” as shown on the screenshot above, you will need to change the port number to the one you used during the installation of MariaDB and click **Update** and then **Close** to close the above dialog and try to login again using the new configuration (case of climsoft version 4.1.4 and earlier versions).

For Climsoft version 4.1.5 and later versions, after double clicking on Climsoft icon, you will get below dialog (figure 22(a)). If you are sure you have typed the correct username and password but have been denied access, click twice (not double click) on the blue label **“Manage database connections”** (figure 22(a)) below to check the database connection details and adjust accordingly.

To Login

Enter user name in *User Name* text box
Enter Password in *Password* text box

To remember the user name in subsequent logins, check the box *Remember username*

To Change database connection

Select the database of your choice using the drop down list or Click twice on *Manage database connections* string.

Figure 22(a): Climsoft Version 4.1.5 Login Dialog

By selecting **“Manage database connections”** string, the dialog in figure 22 (b) below will be displayed.

Connection name	Server address	Database name	Port number
Default_database	localhost	mariaadb_climsoft_db_v4	3308
Testdb	localhost	mariaadb_climsoft_test_db_v4	3308
Mysql	localhost	mariaadb_climsoft_db_v4	3306
Remote	192.168.1.100	mariaadb_climsoft_db_v4	3306

Example connections

Server address: 127.0.0.1

Database name: mariaadb_climsoft_db_v4
mariaadb_climsoft_test_db_v4

Port number: 3306 (MySQL default)
3308 (MariaDB default)

Current selection

Make default

Test connection

Remove connection

OK Cancel

To connect to any of the listed databases:

- Select the database by clicking on the left most cell of that row,
- Click on the button *Make default*
- Click OK to save changes and close the dialog

To connect to a database that is not listed:

- Enter the database details in the new row (i.e.)
- Follow the provided *Example connections* to fill all cells of that row
- Click on the button *Make default*
- Click OK to save changes and close the dialog.

Figure 22(b): Database connection details for Climsoft version 4.1.5 and later

After successful login, Climsoft front-end will appear as shown (Figure 23) below. From the front-end, you can access all the components of Climsoft CDMS, either through the top menu or by clicking the icons on the Welcome screen. However, a user will be able to access only the features corresponding to the privileges associated with the user-group to which they belong to.

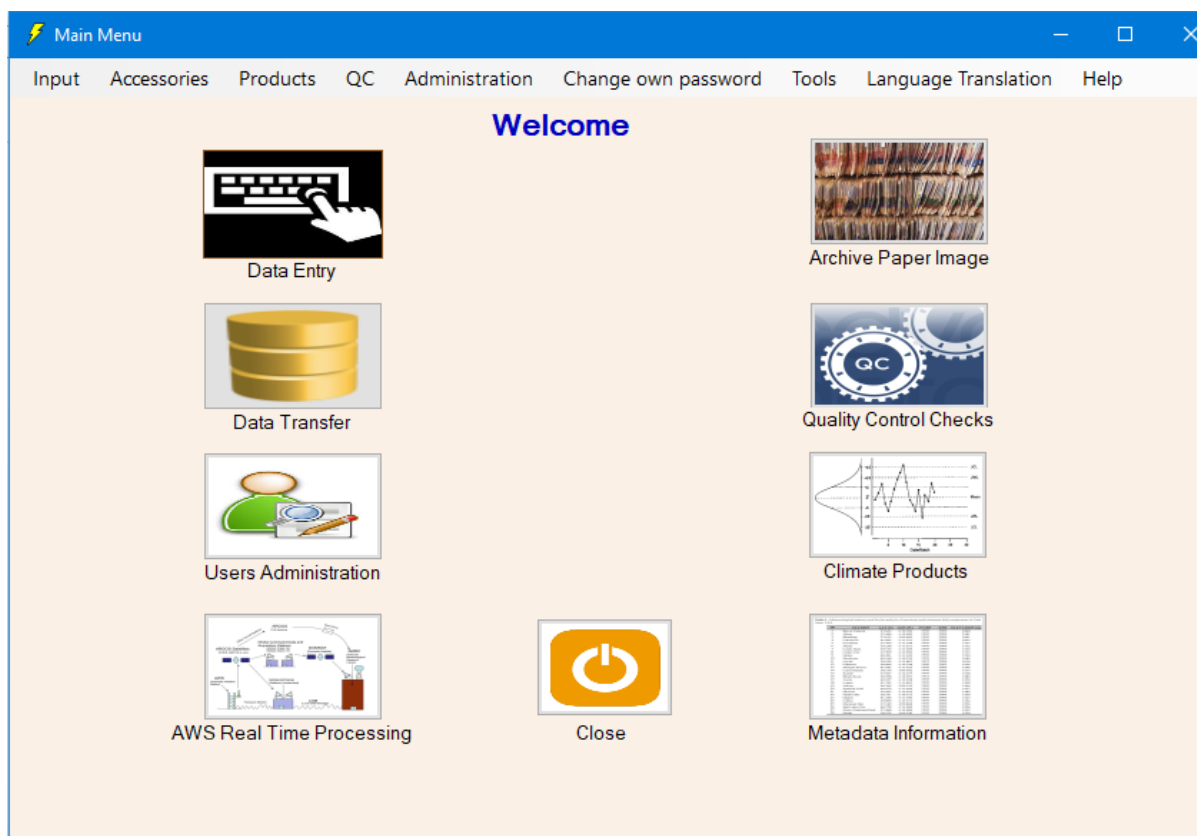


Figure 23 - Welcome form

Congratulations, you have successfully installed Climsoft Version 4 on your computer.

For any question or further clarifications, contact the Climsoft Helpdesk at: support@climsoft.org