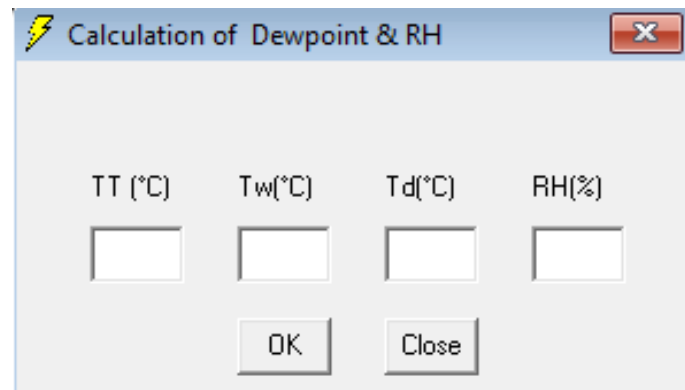
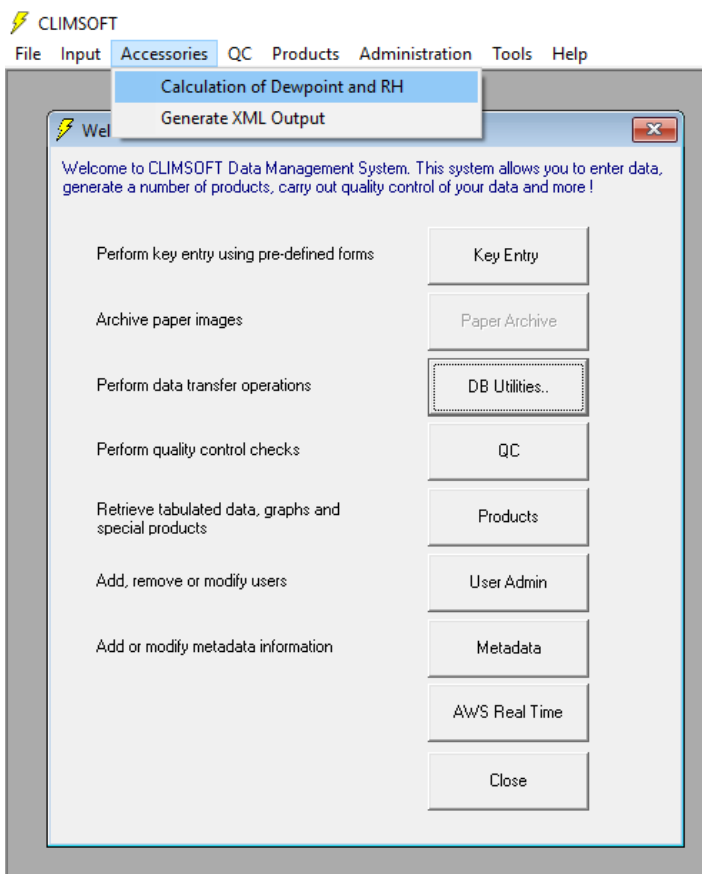


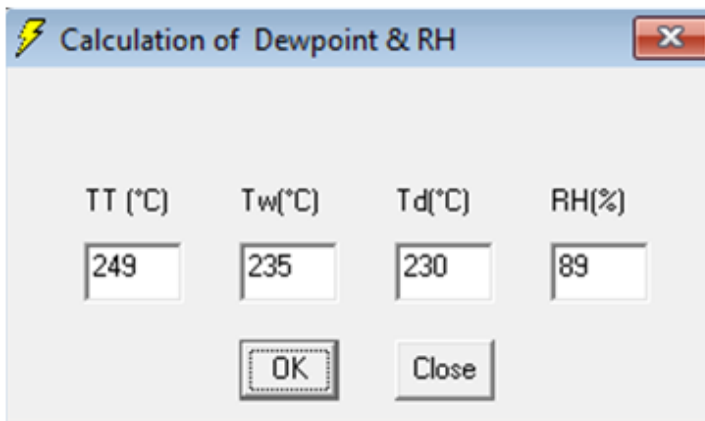
# COMPUTATION OF DEW POINT TEMPERATURE (Td) AND RELATIVE HUMIDITY (RH) USING CLIMSOFI

Climsoft provides you with an easy interface for computation of Dew point temperature (Td) and Relative Humidity (RH). Given the value of the dry bulb temperature (TT) and wet bulb temperature (Tw) you can compute easily the values of Dew point temperature (Td) and Relative Humidity (RH). This facility is located under accessories menu button on the main menu climsoft software (see below).



**Note** that you need to type in the value of dry bulb temperature(TT) and wet bulb temperature(Tw) without a decimal point, otherwise you will get the wrong values of dew point temperature and (Td) and Relative Humidity(RH).

## GOOD

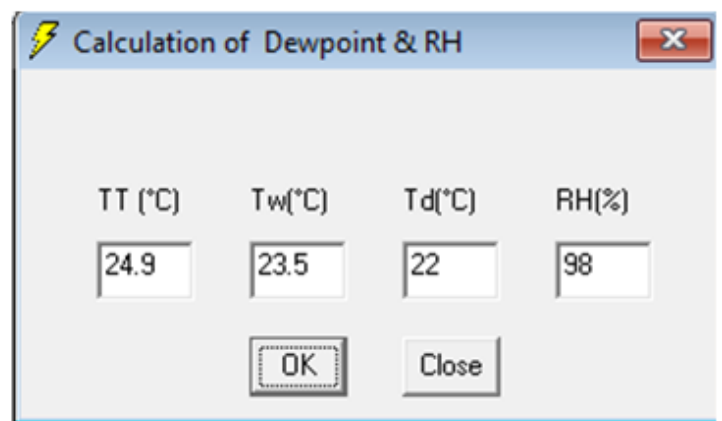


Calculation of Dewpoint & RH

TT (°C)	Tw(°C)	Td(°C)	RH(%)
249	235	230	89

OK Close

## WRONG



Calculation of Dewpoint & RH

TT (°C)	Tw(°C)	Td(°C)	RH(%)
24.9	23.5	22	98

OK Close